

THE INTERNATIONAL CENTRE

Full Facility

FULL FACILITY DIMENSION

Total Square Feet	500,000	Ceiling Clearance	13' - 42'
Loading Docks	50	Dock Dimensions (w x h)	9' - 10' 11" x 8' - 9'
Drive-In Doors	8	Drive-In Doors Dimensions (w x h)	12' x 13'

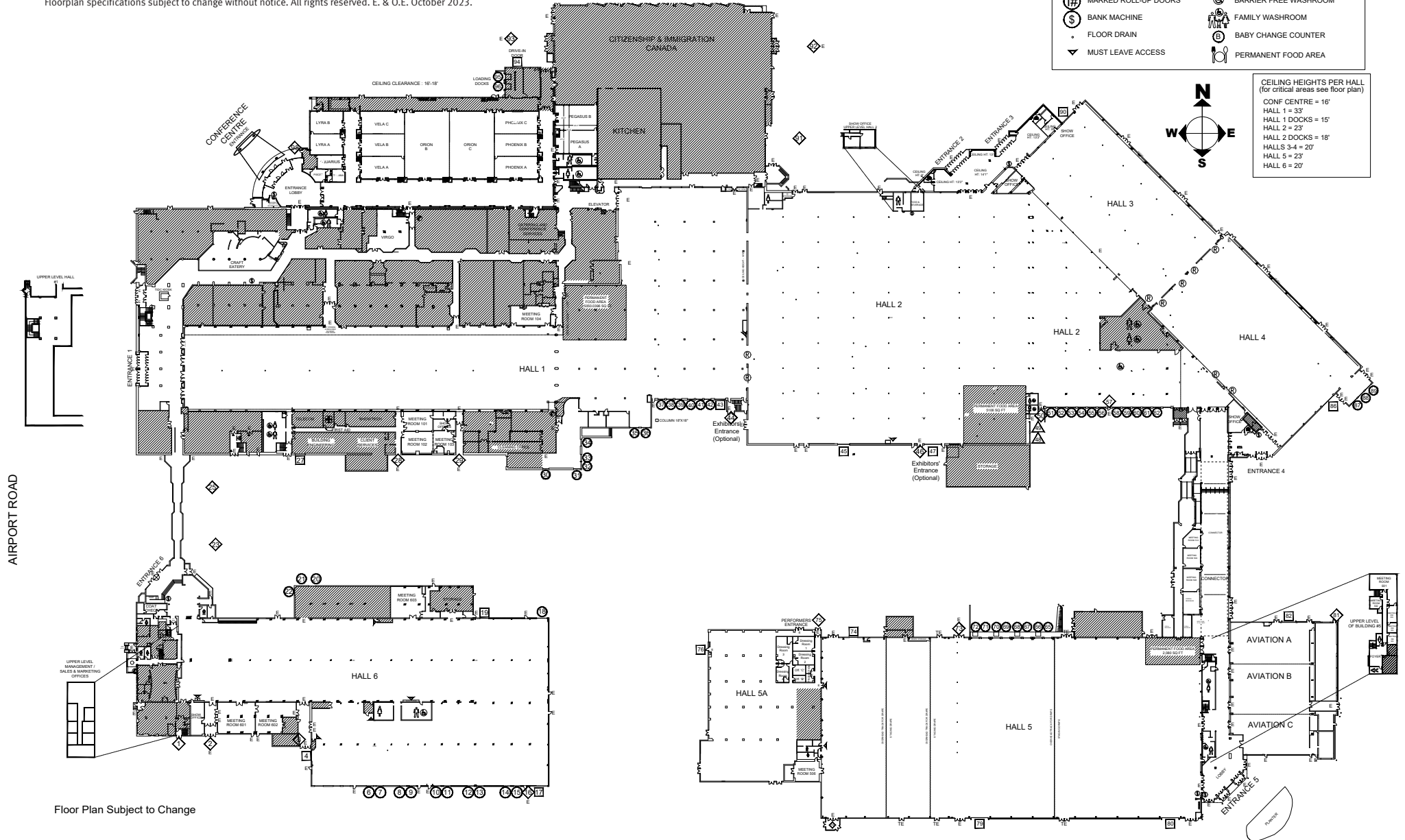
¹10 people per round table, ²Based on booth dimension of 10'x10'. Certain set-ups, layouts, and A/V will reduce capacities. Floorplan specifications subject to change without notice. All rights reserved. E. & O.E. October 2023.

LEGEND

	RESERVED DOORS		FHFHC FIRE HOSE/FIRE HOSE CABINET
	LOADING DOORS		FIRE EXIT
	MAN DOORS		TEMPORARY EMERGENCY EXIT
	DRIVE-IN DOORS		MENS WASHROOM
	ROLL-UP DOORS		WOMENS WASHROOM
	MARKED ROLL-UP DOORS		BARRIER FREE WASHROOM
	BANK MACHINE		FAMILY WASHROOM
	FLOOR DRAIN		BABY CHANGE COUNTER
	MUST LEAVE ACCESS		PERMANENT FOOD AREA

CEILING HEIGHTS PER HALL (for critical areas see floor plan)

CONF CENTRE = 16'
HALL 1 = 33'
HALL 1 DOCKS = 15'
HALL 2 DOCKS = 18'
HALL 3-4 = 20'
HALL 5 = 23'
HALL 6 = 20'



Floor Plan Subject to Change