

# Corporate Social Responsibility

Highlighting the many achievements and milestones accomplished through our CSR and Sustainability Program

ALL DATA WERE COLLECTED FROM THIRD PARTY SOURCES. All information is based off The International Centre internal reporting from Fiscal 2016 (July 2015 to June 2016). For more information on our Sustainability platform, visit [www.internationalcentre.com](http://www.internationalcentre.com).



## LEVEL 1 ASTM/APEX RECERTIFICATION

Attained for Environmentally Sustainable Meetings and Events as recognized by the Green Meetings Industry Council and the Convention Industry Council



## 120% OF FUNDING RAISED FOR MPI FOUNDATION

Compared to 2015



\$2,500 to the Sick Kids Foundation

= 83 baby sized blood pressure cuffs



12 Industry Scholarships

Given to industry partners including Humber College, MPI and CAEM

**617,265 KWH**  
REDUCED FROM 2015 IN ELECTRICITY CONSUMPTION FOR THE ENTIRE FACILITY

= enough to power 67 homes with electricity for a year

**424,543 M<sup>3</sup>**  
REDUCED IN THE NATURAL GAS USAGE, DOWN 34% FROM 2015

= to 21,260 trees planted

**832 TONNES**  
IN CO<sub>2</sub>e REDUCED IN GREENHOUSE GAS EMISSION, REDUCTION IN ELECTRICITY AND NATURAL GAS

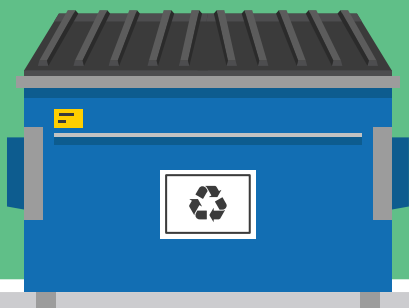
The GHG reduced is equivalent of adding 788 acres of forest for a year

**328**  
THE NUMBER OF TIMES ELECTRIC VEHICLE CHARGING STATION WAS UTILIZED IN 2015

= enough distance for 20 roundtrips between Toronto and Montreal

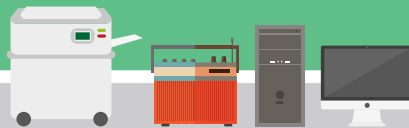
**2,575 GJ**  
OF ENERGY PURCHASED THROUGH RENEWABLE SOURCES & BULLFROG POWER

= enough to power 74 homes with electricity for a year



**30.5% YOY**  
IMPROVEMENT IN WASTE DIVERSION RATE

**1,767 LBS**  
OF ELECTRONIC WASTE RECYCLED



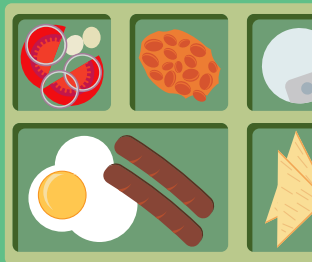
**15**  
WASTE STREAMS CURRENTLY DIVERTED FROM THE LANDFILL



**540**  
MEALS FUNDRAISED AND SERVED TO LOCAL CHILDREN THROUGH BREAKFAST FOR KIDS



**965 LBS**  
OF FOOD DONATED TO KNIGHTS TABLE, SERVING FOOD TO THE LESS FORTUNATE WITHIN THE BRAMPTON COMMUNITY



**27%**  
INCREASE IN VOLUNTEERS FOR THE CSR TASKFORCE DEDICATED TO HIGH STANDARDS OF ENVIRONMENTAL ENGAGEMENT AND COMMUNITY SERVICE

19 Volunteers in 2015

**RANKED 2<sup>ND</sup>**  
AMONGST 300+ PARTICIPANTS IN THE GTA DURING THE PEOPLE POWER CHALLENGE FOR SUSTAINABILITY ENGAGEMENT AND COMMUNITY SERVICE

Achieved 84% of Employee Participation

**85%**  
PARTICIPATION DURING THE 2015 EMPLOYEE DEVELOPMENT DAY

Up 38% from our 2014 Event

